

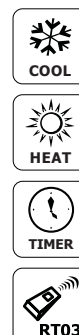
M1P

IR Sticker Receiver Panel for MIGA1 main board

The M1P is a wall mount, infrared sticker receiver panel, with a quick connector to MIGA1 main board.

It can be locally controlled via its On/Off button, or via an IR Remote Control (RT03).

The M1P can be supplied with an 80cm extension cable



Features

- Easily connected to MIGA1 main board using a quick connector
- Locally Controlled:
 - * On/Off
- Remotely Controlled:
 - * On/Off
 - * Mode
 - * Fan Speed
 - * On/Off Timer
- LED Indications:
 - * ON/OFF
 - * Timer
 - * Power
 - * Heat/Cool
- Suitable for Meitav'tec's MIGA controllers

M101P

Plastic Panel Receiver for MIGA1 main board

The M101P is a wall mount, infra-red receiver panel, with a cable connector to MIGA1 main board.

It can be locally controlled via its On/Off button, or via an IR Remote Control (RT03).



Features

- Easily connected to MIGA1 main board
- Locally Controlled:
 - * On/Off
- LED Indication for Fault / Alarm
- Suitable for Meitav-tec's MIGA controllers
- Remotely Controlled:
 - * On/Off
 - * Mode
 - * Fan Speed
 - * Temperature set-point Auto-Fan
 - * Timer
 - * Real Time Clock

DT-02 Duct Sensor

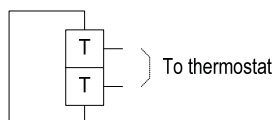
Duct sensor in a plastic enclosure
Suitable for all Meitav-tec's thermostats



Features

- Dimensions:
 - * width - 45 mm
 - * height – 38 mm
 - * depth – 20 mm
 - * rod length – 155 mm
- Weight: 14 gr.
- Resistance – 25C; 77F = 50 K Ω
- Thermal Time Rate – 15 seconds
- Range - -40°C to 110°C ; 39°F to 230°F
- Measurement accuracy - $\pm 3\%$
- Thermistor type - NTC
- Standard – UL94V-0
- Color – white
- Plastic - ABS

Wiring Diagram



GHU Room/Duct Sensor

General purpose stand-alone humidity and temperature sensor for room or duct.

The GHU Room or Duct sensors are general purpose, all-in-one™ sensors for both temperature and humidity.

Humidity measurement is given as a proportional output, 0-10VDC while temperature reading may be given in one of two ways:

1. Normally via a thermistor (for controllers that do not offer 0-10VDC temperature inputs- temperature sensor used must be Meitav-tec type)
2. As a proportional signal (0-10VDC)

With wide temperature and humidity ranges, the GHU Room / Duct sensors are practical and ideal solutions for all room and duct applications.


0-10V
OUTPUT

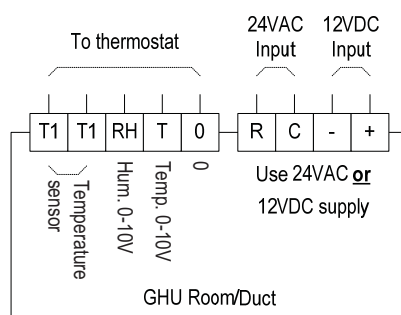
°C / °F

HUMIDITY

Features

- Main Supply – 24VAC or 12VDC
- Proportional temperature output- 0-10VDC
- Proportional humidity output- 0-10VDC
- Temperature set point range from 0°C-60°C / 32°F-140°F (0-10VDC)
- Humidity set point range from 15%-90% RH (0-10VDC)

Wiring Diagram



TS-01 & TS-02 Temperature Sensors

TS-01 External Temperature Sensor, 80 cm cable

TS-02 External Temperature Sensor, 180 cm cable



Features

- Cable 2 wire – AWG 24 BLACK
- Thermistor color – silver or brass
- Dims of Thermistor 1" x 0.25" (2.5 cm x 0.6 cm)
- Resistance – 25C; 77F = 50 K Ω
- Thermal Time Rate – 15 seconds
- Range - -40°C to 110°C ; 39°F to 230°F
- Thermistor type - NTC

TS-05 & TS-06 Temperature Sensors

TS-05 External Temperature Sensor, 80 cm cable

TS-06 External Temperature Sensor, 300 cm cable

Thermistor is coated with isolating plastic.
Other technical specifications are the same
as TS-01 & TS-02.



RS-01 Temperature Sensor

External Temperature Sensor in a decorative box

External temperature sensor in a wall mount, decorative box. Suitable for all Meitav-tec's thermostats



Features

- Cable 2 wire – AWG 24 BLACK
- Dimensions – 1.8" x 1.5" (46 mm x 38 mm)
- Resistance – 25C; 77F = 50 K Ω
- Thermal Time Rate – 15 seconds
- Range - -40°C to 110°C ; 39°F to 230°F
- Thermistor type - NTC

RS-02 Average Temperature Sensor

Average Temperature Sensor in a decorative box

- Ideal for wide, open space hall where temp. differs in each location
- 2 units required for average measurement of Temperature
- Provides average room temperature, using external sensors, installed in two different locations
- Each temperature sensor installed in a wall-mount, decorative box
- Suitable for all Meitav-tec's thermostats
- Technical Specifications are the same as RS-01.



RT03 Remote Control

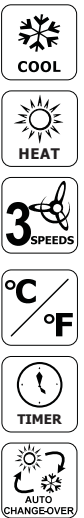
Hand held remote control unit, for Meitav-tec's thermostats and controllers.

An infra-red remote controller, suitable for Meitav-tec's thermostats and receivers. Easy-to-use, with big LCD and a large temperature digit display.



Features

- On/Off
- Modes: Cool / Heat / Auto-change-over / Fan only
- Fan speeds: High / Medium / Low / Auto
- Temperature set point
- °C or °F temperature scale
- Timer - Start / Stop
- Real time clock & day
- 2 X AAA battery operated
- Elegant Housing for wall mounting
- Available in black or white panel



RT04 Remote Control

Hand-held remote control for programmable thermostats, with USA weekly program

An infra-red, remote controller, suitable for programmable thermostats. Easy-to-use, with big LCD and a large temperature digit display, °F display.



Features

- On/Off
- Modes: Cool / Heat / Auto change-over / Fan only
- Temperature set-point
- °F temperature scale
- 2 or 4 periods a day, each with a different set point
- Up to 6 different weekly programs
- Timer
- Real time clock
- 2 X AAA battery operated
- Available in black or white panel



RT05 Remote Control

Hand-held remote control for programmable thermostats, with European weekly program

An infra-red, remote controller, suitable for programmable thermostats. Easy-to-use, with big LCD and a large temperature digit display, °C display.



Features

- On/Off
- Modes: Cool / Heat / Auto change-over / Fan only
- Temperature set-point
- °C temperature scale
- Up to 4 start /stop a day, each with a different set point
- Up to 6 different weekly programs
- Timer
- Real time clock
- 2 X AAA battery operated
- Available in black or white panel

RT40/41 Remote Control

Hand-held remote control for stand-alone dampers, for Meitav-tec's receivers

An infra-red remote controller, suitable for stand-alone dampers. Easy-to-use, with big LCD and a large temperature digit display.



Features

- On/Off
- Modes: Cool / Heat
- Temperature set point
- Timer - Start / Stop, hour & minute display
- 2 X AAA battery operated
- °C or °F temperature scale
- Real time clock & day
- Elegant Housing for wall mounting
- Available in black or white panel

PS-102

230VAC – 12VDC, Power Supply

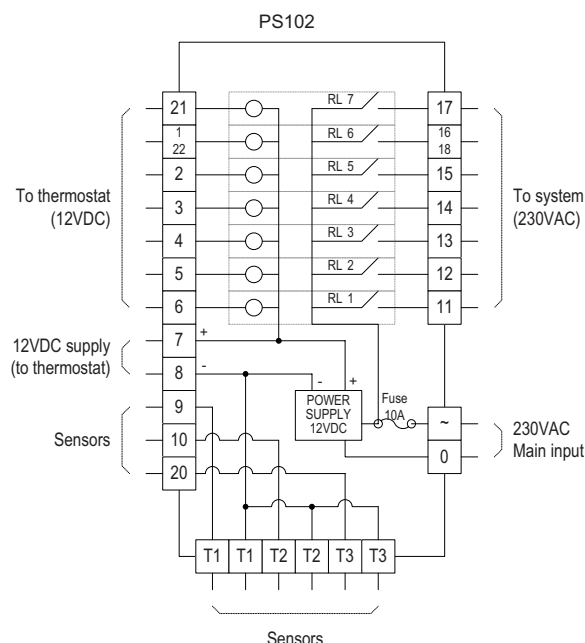
The PS-102 is a power supply for HVAC system. It converts 230VAC to 12VDC for thermostat operation and through relays, transfers commands from thermostat to operate 230VAC HVAC system.

It offers 7 relay outputs to control HVAC system and 3 inputs for Temperature Sensors.

Features

- Main Supply - 230VAC
- 7 x 230VAC outputs – each 6A (resistive), or 3A (inductive), total $\leq 9A$
- 7 x 12VDC inputs
- 3 inputs for temperature sensors
- Inputs & outputs are terminal blocks, screw connector
- PS-102 is supplied in a plastic enclosure box

Wiring Diagram



PS-24

24VAC - 230VAC –Power Supply

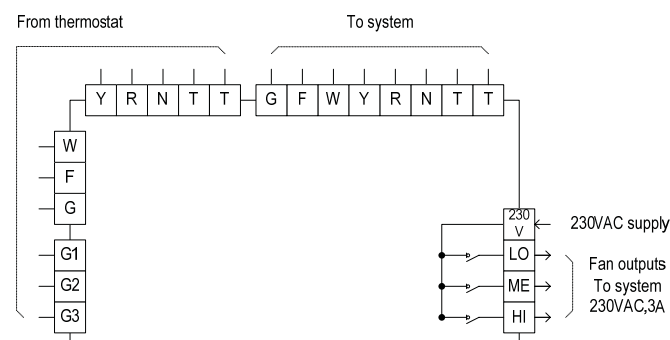
Ideal for 230VAC Fan operation in 24VAC HVAC systems

The PS-24 is a power supply for HVAC system. It converts 24VAC to 230VAC thorough relays for fan operation and transfers commands from thermostat to operate 24VAC HVAC system. All in all, it offers 3 relay 230VAC outputs to control HVAC fan system and 4 x 24VAC inputs, directly transferred to 24VAC outputs.

Features

- Main Supply - 230VAC
- 3 x 230VAC outputs + 4 x 24VAC outputs
- 7 x 24VAC inputs + 1 Temperature input
- Inputs & outputs are terminal blocks, screw connector
- PS-24 is supplied in a plastic enclosure box

Wiring Diagram



PS-104

230VAC – 12VDC, Power Supply

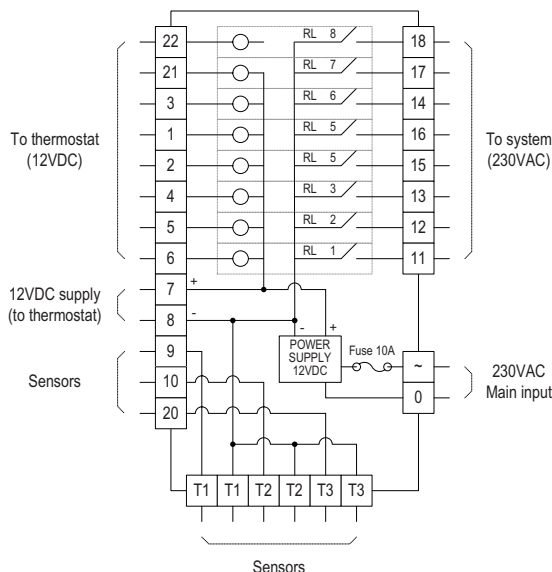
The PS-104 is a power supply for HVAC system. It converts 230VAC to 12VDC for thermostat operation and through relays, transfers commands from thermostat to operate HVAC system.

It offers 8 relay outputs to control HVAC system and 3 inputs for Temperature Sensors.

Features

- Main Supply - 230VAC
- 8 x 230VAC outputs – each 6A (resistive), or 3A (inductive), total $\leq 9A$
- 7 x 12VDC inputs
- 3 inputs for temperature sensors
- Inputs & outputs are terminal blocks, screw connector

Wiring Diagram



PS-600

230VAC – 24VDC, Power Supply

Ideal for 230VAC HVAC units operated by 24VAC

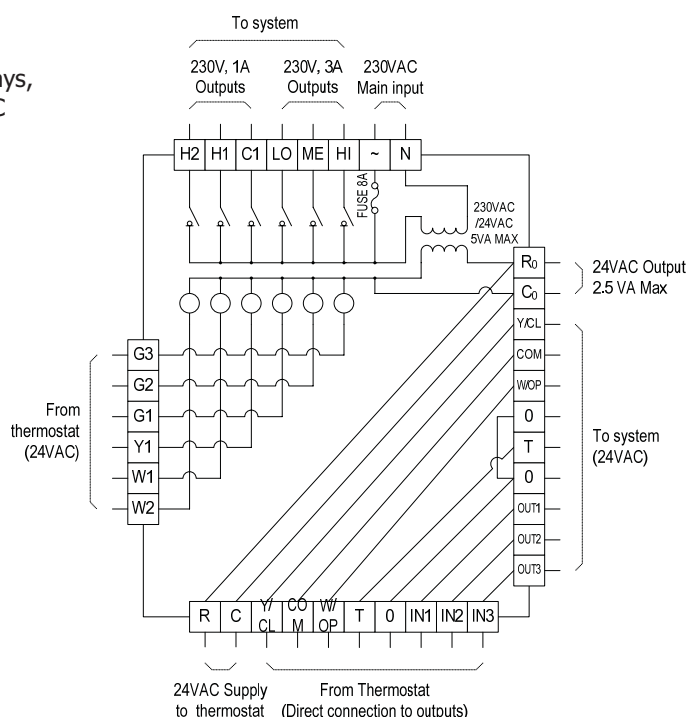
The PS-600 is a power supply for HVAC system. It converts 230VAC to 24VDC for thermostat operation and through relays, transfers commands from thermostat to operate the 230VAC HVAC system.

It offers 6 relay outputs to control HVAC system controllers

Features

- Main Supply - 230VAC
- 6 x 230VAC outputs – 3 outputs 3A and 3 outputs 1A
- 6 x 24VDC inputs
- 10 direct input-output connections low Voltage (24V)
- Inputs & outputs are terminal blocks, screw connector
- PS-600 is supplied in a plastic enclosure box

Wiring Diagram



CTU

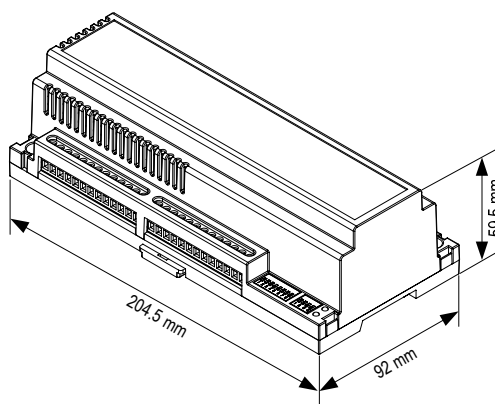
Communication Controller

230VAC, 115VAC, 24VAC



Specifications

Temperature Range		Accuracy	+1°
Weight	0.545 Kg	Plastic	PC/ABS
Color	gray	Flammability	UL94V-0



ERT

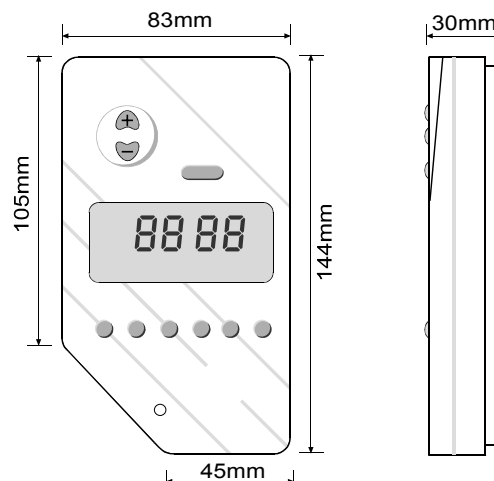
Wall mount thermostat

230VAC



Specifications

Temperature Range	10°C ÷ 30°C , 50°F ÷ 86°F	Accuracy	±1°C
Weight	0.25 Kg	Plastic	PC/ABS
Scale	°C / °F	Flammability	UL94V-0
Color	white	Temperature Input	50K@25°C



ETN (non programmable)

Wall mount thermostat/panel

24VAC, 12VDC



Colors



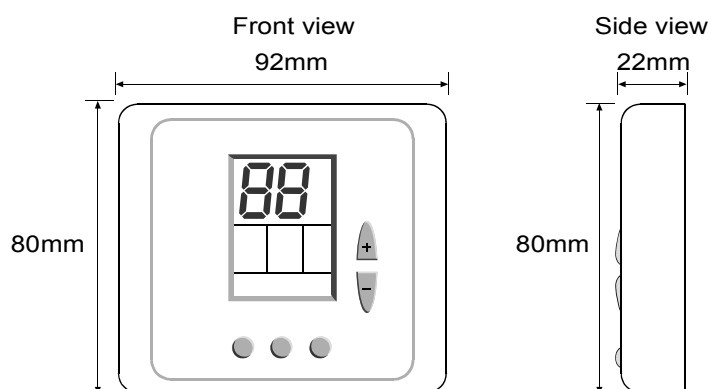
white silver black gold others

Accessories

TS01	RS01	RS02	WP4	RS03
------	------	------	-----	------

Specifications

Temperature Range	10°C ÷ 30°C, 50°F ÷ 86°F	Accuracy	±1°C
Weight	0.25 Kg	Plastic	PC/ABS
Scale	°C / °F	Flammability	UL94V-0
Color	white, silver, black, others	Temperature Input	50K@25°C



ETN (programmable)

Wall mount thermostat/panel

24VAC



Colors



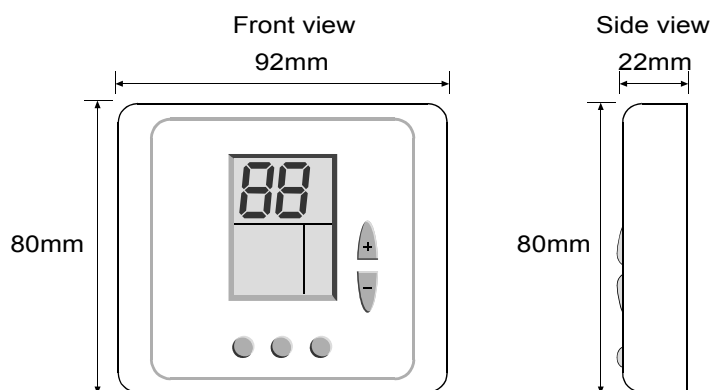
white silver gold black others

Accessories

TS01	RS01	RS02	WP4	RT03
------	------	------	-----	------

Specifications

Temperature Range	5°C ÷ 35°C	Accuracy	±1°C
Weight	0.125 Kg	Plastic	PC/ABS
Scale	°C / °F	Flammability	UL94V-0
Color	white, silver, black, others	Temperature Input	50K@25°C



FMH

Flush Mount thermostat/panel

24VAC, 220VAC, 110VAC



Colors



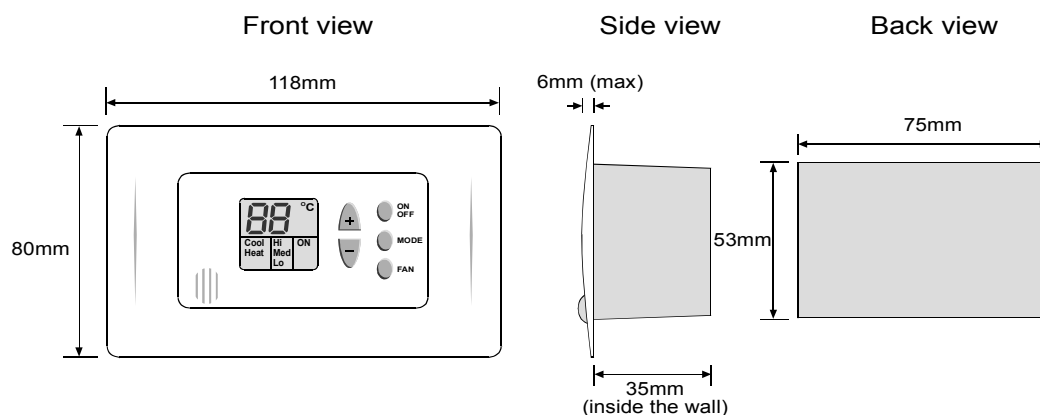
white silver gold black others

Accessories

TS01	RS01	RS02	DT02	RT03
------	------	------	------	------

Specifications

Temperature Range	10°C ÷ 30°C , 50°F ÷ 86°F	Accuracy	±1°C
Weight	0.200 Kg	Plastic	PC/ABS
Scale	°C / °F	Flammability	UL94V-0
Color	white, silver, black, others	Temperature Input	50K@25°C



FMT (non programmable)

Flush mount vertical thermostat/panel

24VAC , 220VAC, 110VAC



Accessories

TS01

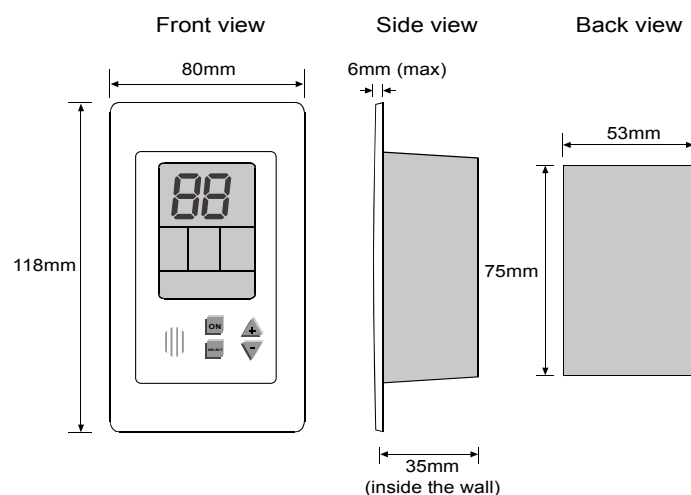
RS01

RS02

RT03

Specifications

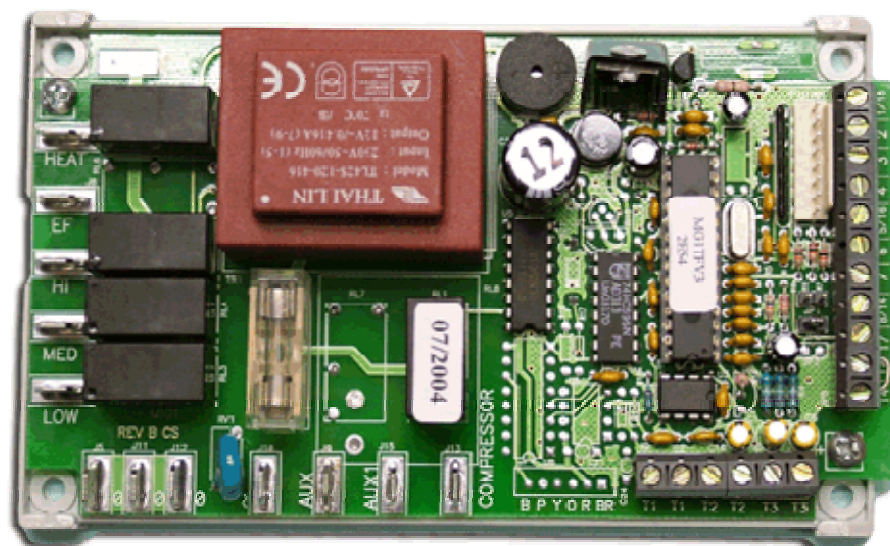
Temperature Range	10°C ÷ 30°C, 50°F ÷ 86°F	Accuracy	±1°C / ±1.5°F
Weight	0.200 Kg	Plastic	PC/ABS
Scale	°C / °F	Flammability	UL94V-0
Color	white	Temperature Input	50K@25°C / 77°F



MIGA

Main Controller ALL-IN-ONE™

230VAC



Accessories

ETN-Miga	FMH-Miga	TS01	MP101	M1P	RT03
----------	----------	------	-------	-----	------

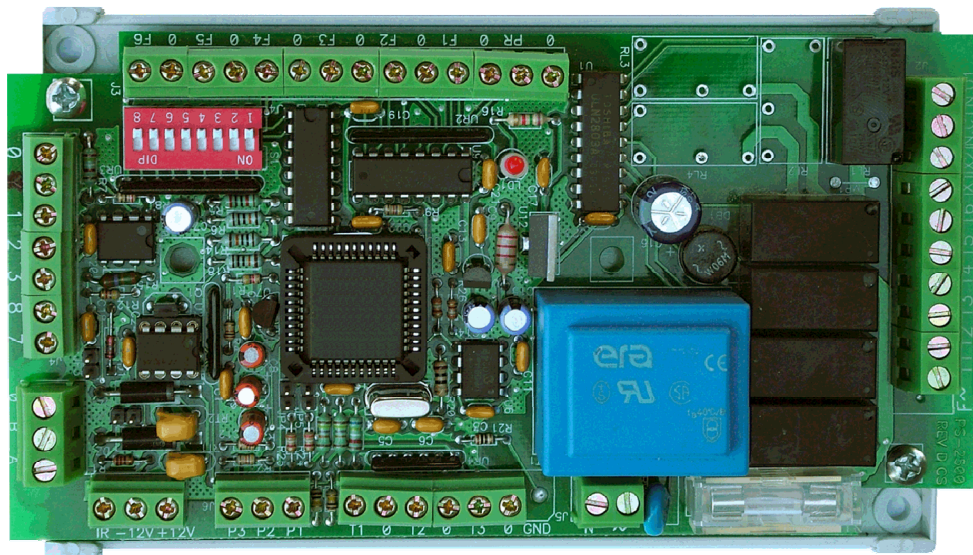
Specifications

Temperature Range	10°C ÷ 30°C	Accuracy	±1°C
Weight	0.400 Kg	Plastic	PC/ABS
Scale	°C / °F	Flammability	UL94V-0

PS (Communication Controller)

Main Controller

230VAC, 115VAC, 24VAC



Accessories

FMH-X500	IRP-X500	FMT-X500	ETN-X500	RS01	RS02	RS03
-----------------	-----------------	-----------------	-----------------	-------------	-------------	-------------

Specifications

Temperature Range	10°C ÷ 30°C	Accuracy	±1°C
Weight	0.340 Kg	Plastic	PC/ABS
Scale	°C / °F	Flammability	UL94V-0

TED (without display)

Wall mount, mechanical thermostat

220VAC, 24VAC

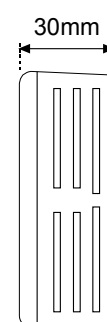
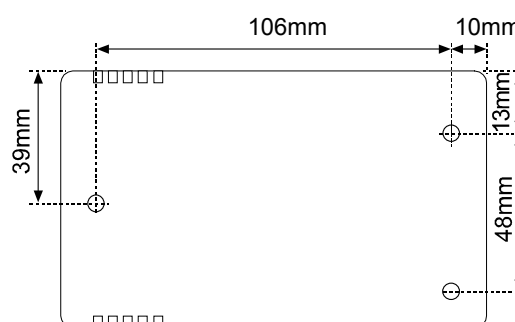
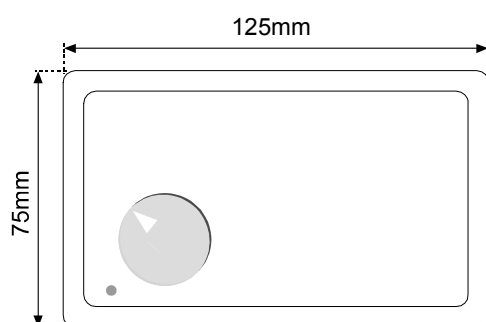


Accessories

TS01	RS01	RS02	WP1
------	------	------	-----

Specifications

Temperature Range	10°C ÷ 30°C	Accuracy	±1°C
Weight	0.150 Kg	Plastic	PC/ABS
Scale	°C	Flammability	UL94V-0
Color	white	Temperature Input	Thermistor 50K@25°C



TED (with display)

Wall mount, mechanical thermostat
220VAC, 24VAC



Accessories

TS01	RS01	RS02	WP1
------	------	------	-----

Specifications

Temperature Range	10°C ÷ 30°C	Accuracy	±1°C
Weight	0.150 Kg	Plastic	PC/ABS
Scale	°C	Flammability	UL94V-0
Color	white	Temperature Input	Thermistor 50K@25°C